

# K23JSD 系列双联安全阀

Series Double Valve

## K23JSD 系列双联安全阀

Series double Valve



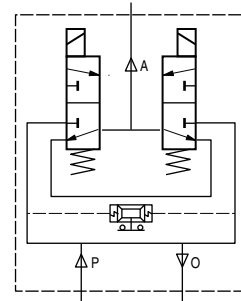
### 产品特点 Features

压力机安全双联阀是控制压力机制动器、离合器正常工作的一种专用气动元件。

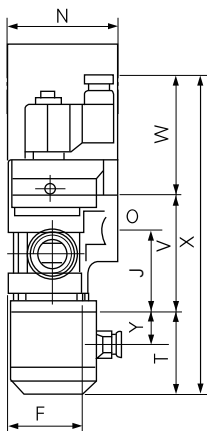
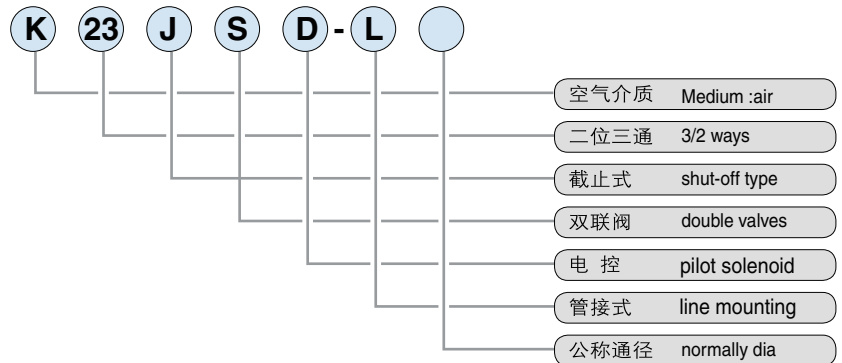
当阀本身出现任何故障时，它能使制动器、离合器的控制气压降低到启动压力之下，从而使压力机迅速停车，以确保设备及人身安全。

Safety double valves is an exclusive pneumatic element controlling the actions of the brake and clutch of a press, when the controlling air pressure below the valve itself goes wrong, it makes pressure of the brake and clutch drop, then stopping the press quickly to ensure safety of the equipment and personal.

### 图形符号 symbols

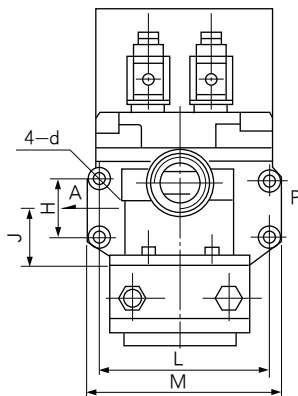


### 型号注释 Order Code



### 外形尺寸 Outlook & Dimension

型号 Type	公称通径 Dia	P	A	O	d	E	F	H	J	L	M	N	T	U	V	W	X
K23JSD-L15	15	G1/2	G1/2	G3/4	7	155	60	41	41	135	155	90	72	58.5	82	110	265
K23JSD-L25	25	G1	G1	G1¼	9	155	68	52	51	149	169	100	72	72.5	101	110	284



### 技术参数 Specification

型号Type	K23JSD-L15		K23JSD-L25	
参数 parameters				
公称通径Dia(mm)	15		25	
接管螺纹 pipe size	P M 20 × 1.5	G1/2	M 33 × 2	G1
	A M 20 × 1.5	G1/2	M 33 × 2	G1
	O M 27 × 2	G3/4	M 42 × 2	G1¼
工作压力范围 Range of working pressure(MPa)	0.3-0.8			
工作温度 Working temperature (°C)	-5-50			
换向时间 Direction changing Time (sec)	≤0.05		≤0.07	
有效截面积S值(mm²)	P-A	≥30	≥90	
Effective sectional area S valve in	A-O	≥120	≥360	